

GrowBox



Quick Guide Manual

Thank you for purchasing **OPCOM Farm GrowBox**, the indoor hydroponics growth system. It is designed with easy installation and efficient growing system in one-touch AUTO mode, up to 50 plants capacity. Read the quick guide manual carefully before setting up. For detailed **user manual** and assembly video, please scan the QR code or visit GrowBox page at www.opcomfarm.com/growbox/support.

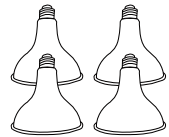
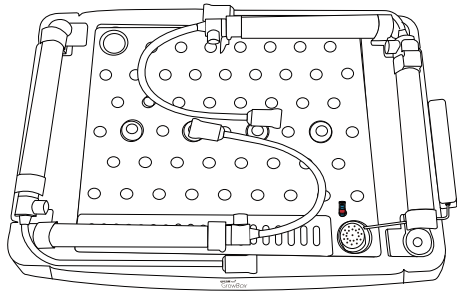
User Manual



www.opcomfarm.com/growbox/support

A. Assembly

A1. Remove all parts from box and check all accessories.



18W LED Growth Lamp (L18B) x 4 (OAE02A)

Grow Kit (OAMS01K)



Nutrient Starter Cup 15(±2)g x 3 (OAMS03A)

Replacement Filters x 3 (OAMS01A)



pH +/- Capsules (OAMS05A) (OAMS06A)



Nutrient Adjuster Cup 5(±1)g x 12 (OAMS04A)



EC and pH Meter Set with Bag (OAE03A, OAE04A)



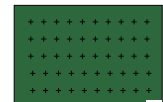
Seeds Capsules (105 pcs / bottle) Green Lettuce, Red Leaf Lettuce, Basil (OSLT01A, OSLT02A, OSHB01A)



Seedling Sponge (60 x 4) (OAMS10A)



Tweezers (OANS12A)



Green Cloth (OANS11A)

Lighting support kit



Long Support Tube x 2 (OANS04A)

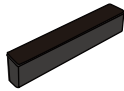


Short Support Tube x 2 (OANS05A)



Screw pack (Screw Φ4 x 10mm x 8 & Screwdriver x 1) (OAS03A)

Planting Accessories



Sprout Cover (OAS04A)



Sprouting Sponges x 12 (OAMS02A)

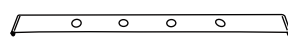


Draining Tube x 1 (OAS06A)



Insect Net (OAS05A)

Climbing tube kit



Climbing Tube Holder x 1 (OAS04A)



Climbing Tube x 4 (OANS05A)



Warranty Card



Quick Guide Manual



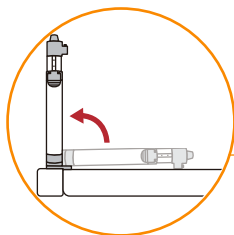
Optional Accessories Kit



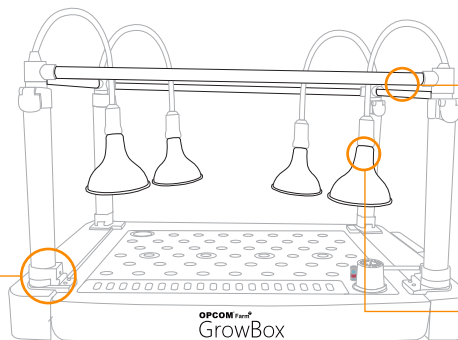
Planting Q&A Kit

A2. Easy Set Up

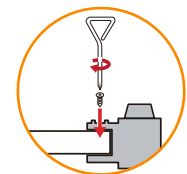
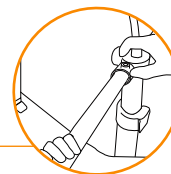
- 1 Raise the four Support Arms straight up.
- 2 Install the Long and Short Support Tubes.
- 3 Install the LED Growth Lamps.



1

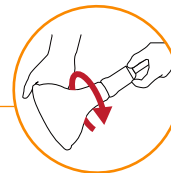


2



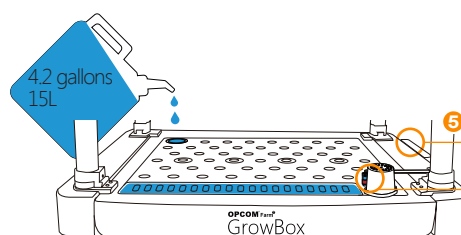
Insert tubes into sockets, ensuring that the holes line up. Use the included screws and screwdriver to line up hole. Do not use power tools as this may damage the plastic.

3

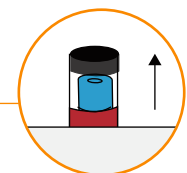


Screw four LED Growth Lamps into holder clockwise. Tighten until snug, but not too tight.

- 4 Add 4.2 gallons water to the unit.
- 5 Turn power on and test the unit, please refer to **user manual** page 9 for cycle descriptions.



4



Maintain water level and keep the water level indicator on the top.

Troubleshooting

Issue	Checkpoints / Solution
Lamps are not lighting up	<input checked="" type="checkbox"/> Make sure all power cables are connected.
	<input checked="" type="checkbox"/> Power button is turned ON.
	<input checked="" type="checkbox"/> Make sure LED status is not OFF.
	<input checked="" type="checkbox"/> If on AUTO, HI or LOW there will be periods of time during a 24-hour cycle when lamps are off. (See the user manual page 9 for cycle descriptions.)
Pump is not working	<input checked="" type="checkbox"/> If a lamp has burned out or does not work, replace with a new OPCOM LED lamp (OAEE02A).
	<input checked="" type="checkbox"/> Make sure the pump's cable is correctly plugged into the control box.
	<input checked="" type="checkbox"/> Make sure Pump status is not OFF.
Pump has a buzzing sound	<input checked="" type="checkbox"/> If on AUTO, HI or LOW there will be periods of time during a 24-hour cycle when lamps are off. (See the user manual page 9 for cycle descriptions.)
	<input checked="" type="checkbox"/> If the pump still does not work, replace with a new OPCOM pump (OAEE01A). Refer to pump box for installation.
	<input checked="" type="checkbox"/> Pump may give off a buzzing sound in the beginning due to air inside the pump. After a minute with water running through the pump, this should be reduced.
The lamp or the pump stopped working after a few hours	<input checked="" type="checkbox"/> Too low of a water level in your GrowBox may have resulted in air entering pump. Over time this may shorten the life of the pump. Please maintain correct water level at all times.
	<input checked="" type="checkbox"/> If pump is failed, replace with a new OPCOM pump (OAEE01A). Refer to pump box for installation.
	<input checked="" type="checkbox"/> Opcom Farm's control box is designed with Auto, HI and LOW cycles, which will turn the lamps and the pump on and off at certain intervals. This is to mimic an outside daily cycle, offer the best growing condition for your and plants, save you energy.
	<input checked="" type="checkbox"/> Check the user manual page 9 for cycle descriptions.

GrowBox Q&A

Question	Answer
Pump was running without water.	This can shorten the life of the pump. Maintain proper water level. Always keep water above the red line.
What type of lamps can be used in the GrowBox?	The lamps provided with your GrowBox is standard E26 mount OPCOM 18W (L18B) LED Growth Lamp. This is suitable for most plants' growth. You may also use OPCOM Professional LED Growth Lamp 50W (L50B) to accommodate special growth needs.
When should the climbing tubes be used?	The climbing tubes is an optional function for your GrowBox, and you will only need to install the climbing kit when growing tall plants and vining plants like tomatoes. For these plants, the climbing tubes can be used to support the plants as they grow.
When should we use the insect net?	We recommend using the net if the product is in an environment where insects may be present.

Maintenance

Change Water

After a cycle of planting, you may want to change water, or clean the unit. Check the **user manual** pages 23-24 for details.

EC / pH Meter Use and Calibration

- ① Keep the electrode clean of EC/pH meter and cover the electrode protective cap when not in use.
- ② Take out the batteries when not in use for an extended amount of time.
- ③ For the calibration please check the **user manual** page 26 for details.

Planting Q&A

Q1 : Sprouts are stuck in the sponge and can't come out.

A1 : Pull the sprouts gently out from the sponge with tweezers, make sure the seed capsule's top half is not stopping the growth of a sprout.

To see more information of planting, please refer to GrowBox planting Q&A.

For more information, please visit

www.opcomfarm.com

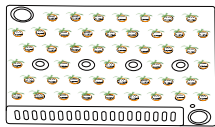
☑ Please read and follow every steps to avoid any malfunction.

B. Planting

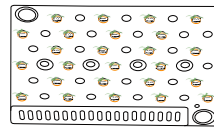
B1. Sowing stage

☐ 1 Refer to below table for sponge quantity and planting numbers.

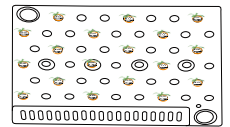
Plant Size	Small
Sponge Number	72
Planting Number	50



Plant Size	Medium-Large
Sponge Number	36
Planting Number	25



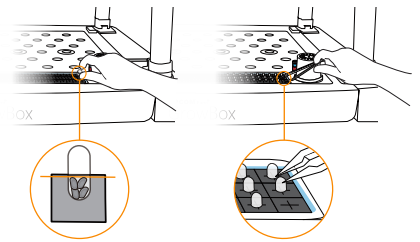
Plant Size	Very Large
Sponge Number	25
Planting Number	18



- ☐ 2 Fully wet sponges at the sprout area.
- ☐ 3 Insert capsule seed half side into sponge with dry hands
- ☐ 4 After 30 minutes of seed sowing, remove the top half of the seed capsules with tweezers.
- ☐ 5 Cover the sprout cover for 0-7 days for sprouting and ensure sponge wet during this stage.

Control Box	Time after planting	LED Mode	Pump Mode	Notes
Sowing Stage	Day 0~Day 7	OFF	OFF	<ul style="list-style-type: none"> • Remove the top half of the seed capsules. • Wet Sponge.

* Please keep the seed capsules in refrigerator.

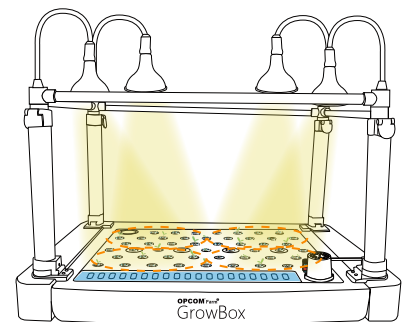


B2. Seedling Stage

- ☐ 1 When the germination rate exceeds 70%, move to the seedling stage, discard excess sponges.
- ☐ 2 Move all sponge to the growing hole and set up in balance depending on plant size.
- ☐ 3 In each sponge, keep strong plants and cut the other weak plants.
- ☐ 4 Add 1 starter cup nutrient into the water and ensure EC between 1000-2000 $\mu\text{S}/\text{cm}$ (=1.0-2.0 ms/cm).
- ☐ 5 Ensure pH between 5.5-6.5 (adjust by pH capsule).
- ☐ 6 Adjust LED lights and keep distance to cover all plants.

* For EC & pH adjustment instructions, please refer to **user manual** pages 25-26.

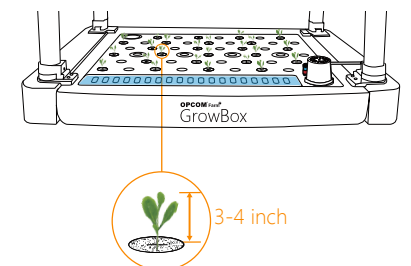
Control Box	Time after planting	LED Mode	Pump Mode	Notes
Seedling Stage	Day 7~Day 14	ON	ON	<ul style="list-style-type: none"> • Ensure seeds germination rate > 70%. • Adjust LED lights position. • Ensure EC & pH value.



B3. Growing Stage

- ☐ 1 When young plants grow to 3-4 inches height, change control box to AUTO mode.

Control Box	Time after planting	LED Mode	Pump Mode	Notes
Growing Stage	After Day 14	AUTO	AUTO	<ul style="list-style-type: none"> • Maintain EC & pH value.



B4. Grow to Harvest

- ☐ 1 After 4-6 weeks, harvest the larger plants for consumption.
- ☐ 2 Reserve smaller plants to grow.

* To save time, sow the new seeds in sprout box for the next planting cycle before a week of harvesting.

C. Optional

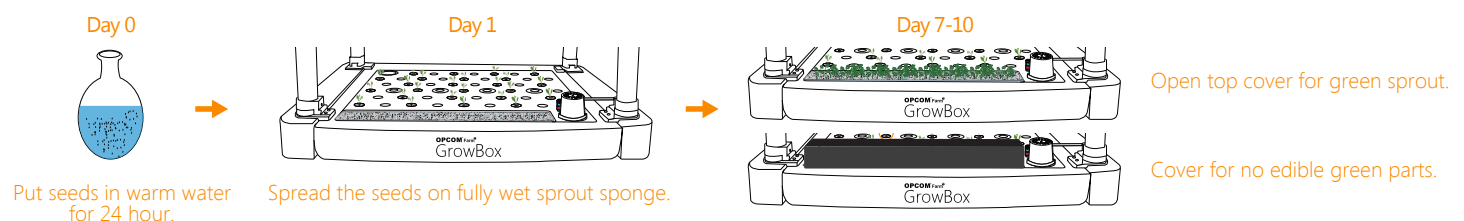
C1. Regrowing

OPCOM Farm is designed with a special re-grow process to maximize harvest capacity for family consumption. First harvest cycle takes 3-4 weeks after seeding young plant is planted. During harvesting, cut out the larger leaves and allow the smaller ones to continue to grow in the machine. After the first harvest, you can continue the harvesting method weekly for the next 3-4 weeks without the need to re-seed.



C2. Sprout Process

GrowBox is not only a hydroponics system but also a Sprout Machine with our free gift, sprout cover. Within one Hydroponics cycle time, you have 3-4 sprout harvests and each harvest cycle is 7-10 days. Enjoy your maximum planting capacity. Refer to **user manual** pages 19-20 for details.



Please visit OPCOM farm website at www.opcomfarm.com/growbox/support for complete information, including user manual, Planting Q&A, videos and updates.